

7. RETFORD ARTS HUB STUDIO ARTISTS

Sat 4, Mon 6, Sat 11, 18 & 25 May, 10-4

Retford Arts Hub, 11 Churchgate, RETFORD DN22 6PA

01777 860414

info@retfordartshub.com

i: [retfordartshub](#)

f: [retfordartshub](#)

C NW (Studios on 2nd floor via stairs. Ground floor cafe & shop – wheelchair access to ground floor shop only. Artists happy to come downstairs to meet visitors)

Artists will be in their studios **on 4 & 6 May** to demonstrate work & meet visitors. Incl: **Lesley Pearson** – watercolours, painting birds & animals found around the canal and illustrates maps of our canals. **Paul Straker** – mainly in oils, painting local scenes, en plein air; also pastels, inks & charcoal for life drawing & sketching. **Mark Bloomer** – acrylics, oils & fine pencil drawings of animals & landscapes. Their work is for sale, in their studios and in our ground floor shop where there is a cafe providing drinks and snacks and a calm space to sit and enjoy the arts and crafts on display.

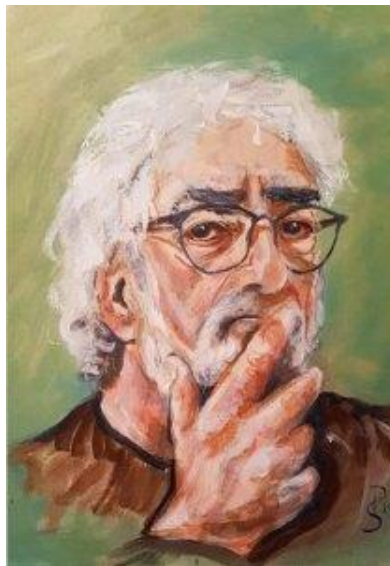
*In the Retford Arts Hub, on Churchgate, we have **seven studios** where artists can work individually or with others for mutual support. Our **shop** is dedicated to promotion of local artists and makers.*

*We are a **Community Interest Company** that began eight years ago and has developed into a thriving community of people interested in arts, crafts and local visitor information. Our artists run **Workshops** and display work in our **Gallery**.*

Mark Bloomer – markbloomerfineart.com i: [@marksartstudio2](#)

Lesley Pearson – www.jellygnomes.co.uk f: [@jellygnomes](#)

Paul Straker – f: [@paulstrakerart](#)



©Marj Freeston-Images